



夹紧气缸 CPN80 NAAMS 规格 Pneumatic clamp NAAMS CPN80

主要特点:

- 钢制壳体
- 带曲杠原理
- 打开角度容易调节
- 检测销验证终端位置
- NAAMS 规格
- 4 个安装面(正面, 背面和侧面)
- 气缸缸径: 80 mm
- 2 个气源口 G1/4" 和 1/4" NPT
- 电感式接近开关 (接口 M12x1)
- 带手动机构

Main characteristics:

- Aluminum flanks
- Toggle action mechanism
- Opening angle easily adjustable
- Checking pin for verifying the end position
- NAAMS Norm
- 4 mounting areas (front, back, on the sides)
- Pneumatic cylinder bore: 80 mm
- 2 feeding ports G1/4" or 1/4" NPT
- Inductive proximity switch (connection M12x1)
- Hand lever



[PDF](#)



[3D Step](#)



[INDEX](#)

索引.

Index.

页码 Page	描述 Description	
1	主要特点/ Main characteristics	
2	订货举例/ Ordering example	
3	尺寸页码 Dimensional page	CPN80-XXX
4		CPNM80-XXX
5	图表 + 气路图 Diagrams	负载/ 力图 Load / force diagrams
6		电感式接近开关 Inductive proximity switch
		气路图 Pneumatic plan
6-7	操作说明 Operating instructions	打开角度调整 Opening angle change
7	打开角度 / Opening angles 备件/ Spare parts	
8 - 10	Naams 规格夹臂/ Arm Naams	
11	备注 / Notes	



订货举例.

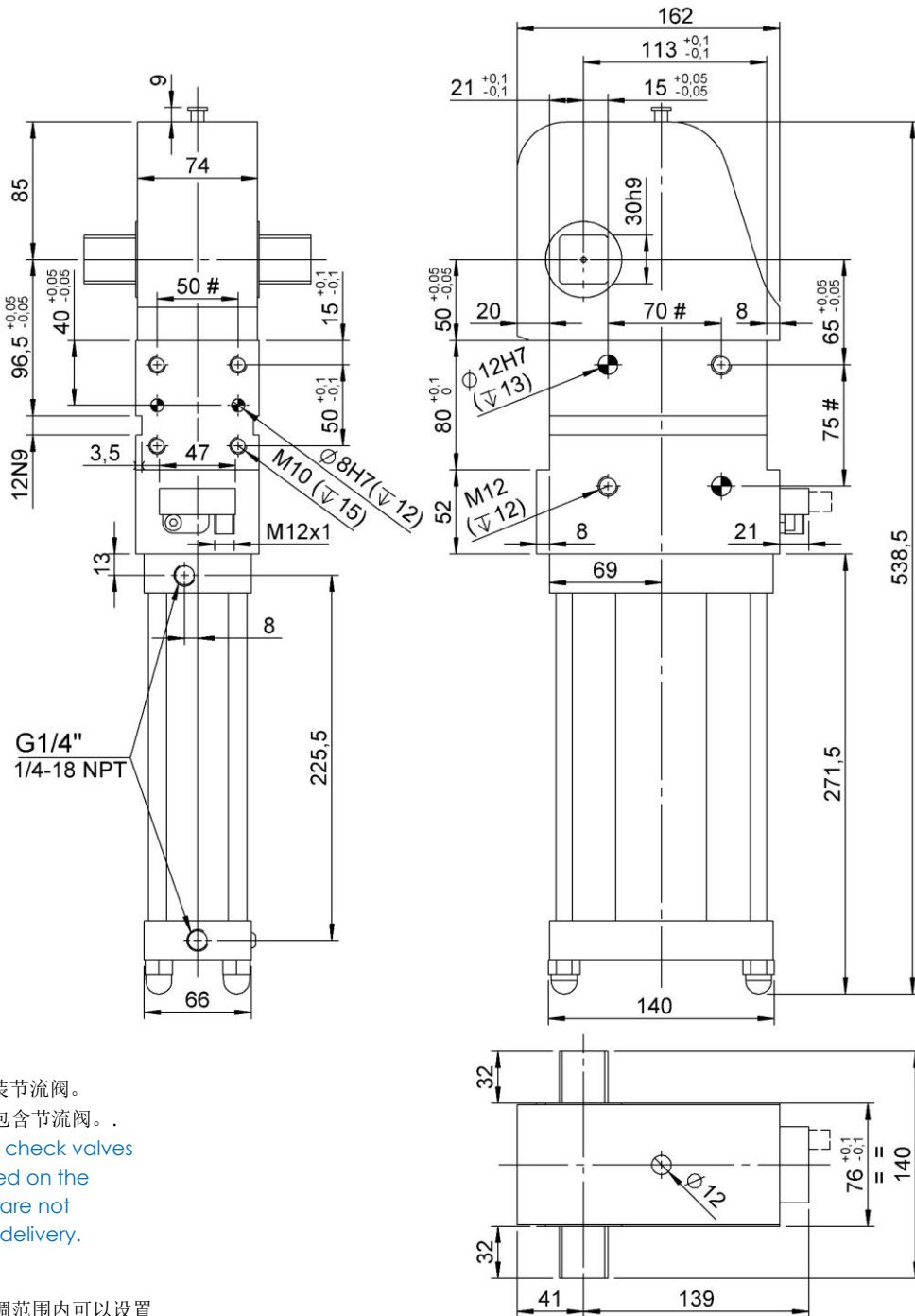
Ordering example.

CPN80	LA	-	XXX	I1	G	-	107																		
<p>产品类型和气缸缸径: Model and cylinder bore</p> <p>CPN80 标准 CPN 夹紧气缸 缸径 Ø80mm standard clamp CPN cylinder bore Ø80mm</p> <p>CPNM80 标准 CPN 夹紧气缸 带手动机构 缸径 Ø80mm standard clamp CPN with hand lever cylinder bore Ø80mm</p> 			<p>接近开关: Proximity switch:</p> <p>X: 无接近开关 without proximity switch</p> <p>I1: VEP 标准电感式接近开关 (0°) inductive proximity switch VEP standard (0°)</p> <p>I2: VEP 电感式接近开关 (90°) inductive proximity switch VEP (90°)</p> 																						
			<p>夹臂类型: Type of arm:</p> <p>XXX: 无夹臂 without arm</p> <p>夹臂可单独提供 (请参见 10-12) Arms supplied separately (See pages 10-12)</p> 																						
<p>手柄位置 Hand lever position:</p> <p>LX: 手柄原配位置 lever arrangement</p> <p>LA: 手柄在左侧 left lever</p> <p>LB: 手柄在右侧 right lever</p> 			<p>气源接口类型: Feeding ports type:</p> <p>G: G 1/4" 接口 ports type G 1/4"</p> <p>N: 1/4" NPT 接口 ports type 1/4" NPT</p> 																						
			<p>打开角度调整: Adjustable opening angle:</p> <table border="1" style="width: 100%; border-collapse: collapse; text-align: center;"> <thead> <tr style="background-color: #0070C0; color: white;"> <th colspan="3">CPN80</th> </tr> <tr> <th>从 from</th> <th>至 to</th> <th>标准</th> </tr> </thead> <tbody> <tr> <td>3°</td> <td>135°</td> <td>122°</td> </tr> </tbody> </table> <table border="1" style="width: 100%; border-collapse: collapse; text-align: center;"> <thead> <tr style="background-color: #0070C0; color: white;"> <th colspan="3">CPNM80</th> </tr> <tr> <th>从 from</th> <th>至 to</th> <th>标准</th> </tr> </thead> <tbody> <tr> <td>2,5°</td> <td>122°</td> <td>122°</td> </tr> </tbody> </table> <p>如未标明，气缸将按标准角度供货。 If not indicated, the clamp will be provided with the standard opening angle.</p>	CPN80			从 from	至 to	标准	3°	135°	122°	CPNM80			从 from	至 to	标准	2,5°	122°	122°				
CPN80																									
从 from	至 to	标准																							
3°	135°	122°																							
CPNM80																									
从 from	至 to	标准																							
2,5°	122°	122°																							



CPN80 XXX...

夹紧气缸, D.80, 打开角度可调.
Clamp, D.80, Vario Op. Angle.



气缸外部必须安装节流阀。
VEP 供应气缸不包含节流阀。
External throttle check valves must be provided on the assembly. They are not included in the delivery.

标准打开角度：
在 3° -135° 可调范围内可以设置 31 个角度位置。

Standard opening angles:
settable in 31 different positions in a range between 3° and 135°.

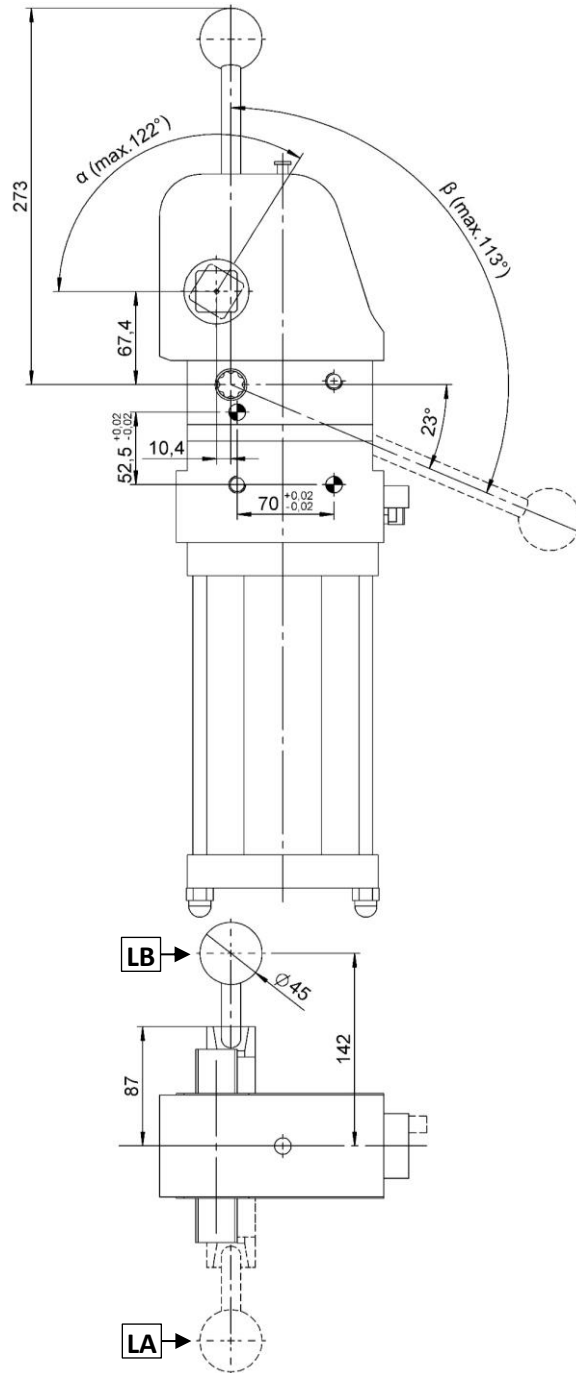
公差: 定位销孔 ± 0.02 , 螺纹孔 ± 0.1
Tolerances: dowel holes ± 0.02 , screw holes ± 0.1

类型 Type	缸径 Cylinder bore	保持力 Holding moment	重量 Weight	工作压力 Working pressure	最大夹紧扭矩 (5 bar) Clamping max. torque (5 bar)	耗气量 (5 bar) Air consumption (5 bar)
	[mm]	[Nm]	[Kg]	[bar]	[Nm]	[l]
CPN80 XXX...	80	2500	~ 11,5	4 - 8	1000	7,9



CPNM80L...XXX...

夹紧气缸, D.80, 打开角度可调, 带手动机构。
Clamp, D.80, Vario Op. Angle, Hand Lever.



α	16°	29°	43°	58°	77°	90°	107°	122°
β	37°	46°	55°	64°	76°	86°	100°	113°

手柄角度控制按 22,5°一格调整
Manual control adjustable in steps of 22,5°

公差: 定位销孔 ± 0.02 , 螺纹孔 ± 0.1
Tolerances: dowel holes ± 0.02 , screw holes ± 0.1

型号 Type	缸径 Cylinder bore	保持力 Holding moment	重量 Weight	工作气压 Working pressure	最大手动推力 Max. manual force
	[mm]	[Nm]	[Kg]	[bar]	[N]
CPNM80L...XXX...	80	2500	~ 13,5	4 – 8	200

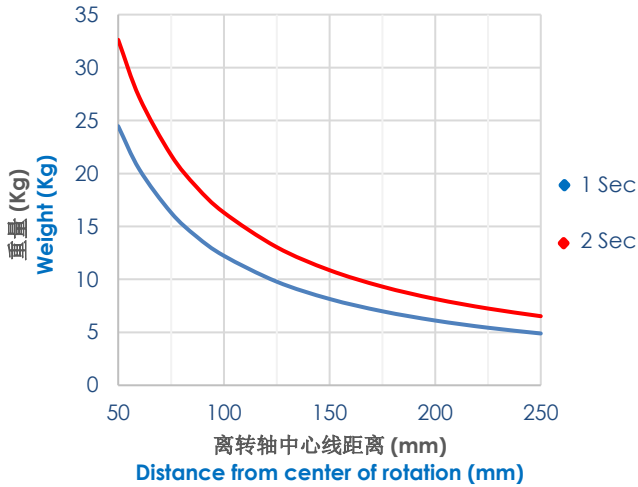


图表 CPN80.

Diagrams CPN80.

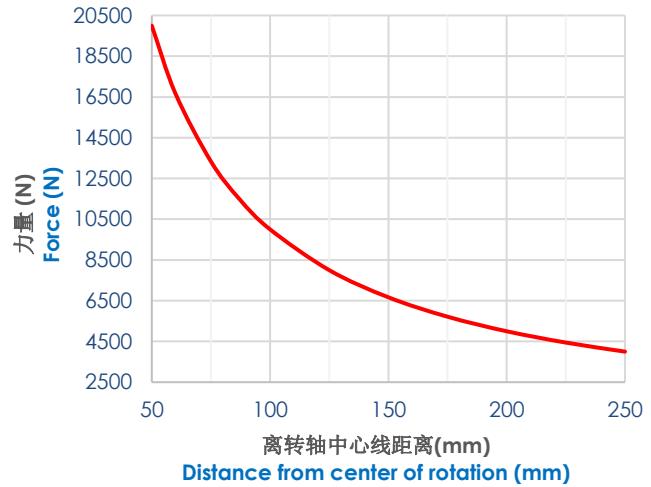
5 bar 气压夹臂最大承受负载(Kg).

Max. load applicable on the arm (Kg) at 5 bar.



5 bar 气压最大承受力 (N)..

Max. force applied (N) at 5 bar.



类型 Type	最大重量力矩 Max. torque By weight [Nm]		最大偏心力矩 The max torque for applications with the load out of axis [Nm]	
	1 sec	2 sec	1 sec	2 sec
CPN 80	12	16	9,5	12,5

最大夹紧扭矩(5 bar): **1000 Nm.**

Max. clamping torque (5 bar): **1000 Nm.**

M12 电感式接近开关示意图 (cod. 09960/L/C).

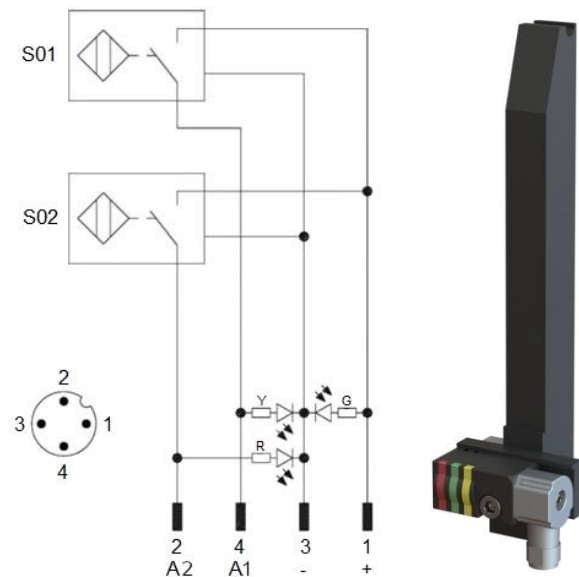
Diagram for M12 inductive proximity switch (cod. 09960/L/C).

技术参数:

- 输出类型: PNP;
- 输入电压: 10-30 VDC;
- 最大换向电流: 150 mA;
- 耗电电流: < 20 mA;
- 电压差: < 1,8 V
- 工作温度: -25° / 70° C.

Technical data:

- Output type: PNP;
- Feeding voltage: 10-30 VDC;
- Max. commutating current: 150 mA;
- Power supply: < 20 mA;
- Voltage drop: < 1,8 V;
- Temperature range: -25° / 70° C.



S01 = 打开信号
S01 = opening signal
S02 = 关闭信号
S02 = closing signal

Y = 黄色 LED / yellow LED
G = 绿色 LED / green LED
R = 红色 LED / red LED

1 = 棕色线/ brown wire
2 = 黑色线/ black wire
3 = 蓝色线/ blue wire
4 = 白色线/white wire



打开角度.

Opening angles.

类型 Type	打开角度 / Opening angles																														
	3	5	7	10	13	16	20	24	29	33	38	43	48	53	58	63	68	72	77	81	86	90	95	99	103	107	112	117	122	127	135
CPN80...	•	•	•	•	•	•	•	•	•	•	•	•	•	•	•	•	•	•	•	•	•	•	•	•	•	•	•	•	•	•	•
CPNM80...	•	•	•	•	•	•	•	•	•	•	•	•	•	•	•	•	•	•	•	•	•	•	•	•	•						

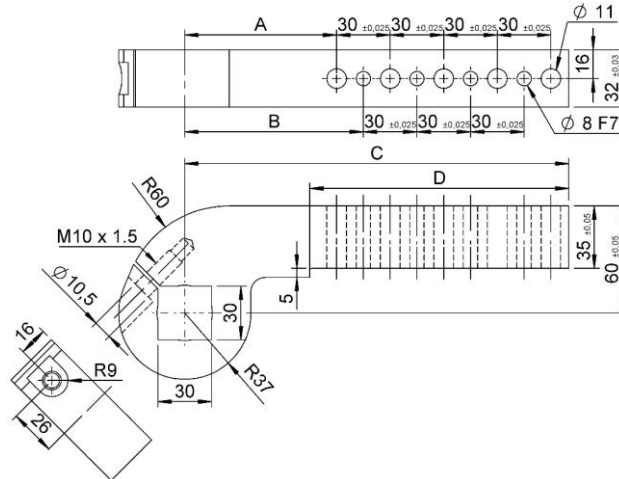
备件.

Spare parts.

配套元件 # Kit	图片 Picture	描述 Description	代号 Article
接近开关 Proximity switch		VEP完整接近开关 (0°-90°) Inductive proximity switch VEP (0°-90°)	09960/L/C
密封圈套装 Seals kit		气缸密封组件 Seal components for pneumatic cylinder	SCR-CPL80
气缸 Pneumatic cylinder		完整气缸带GAS气源口 Complete pneumatic cylinder GAS	09941/C
		完整气缸带NPT气源口 Complete pneumatic cylinder NPT	09941/N/C
手柄 Manual control lever		手柄 CPLM... Lever manual control pneumatic clamp CPLM...	10170/C

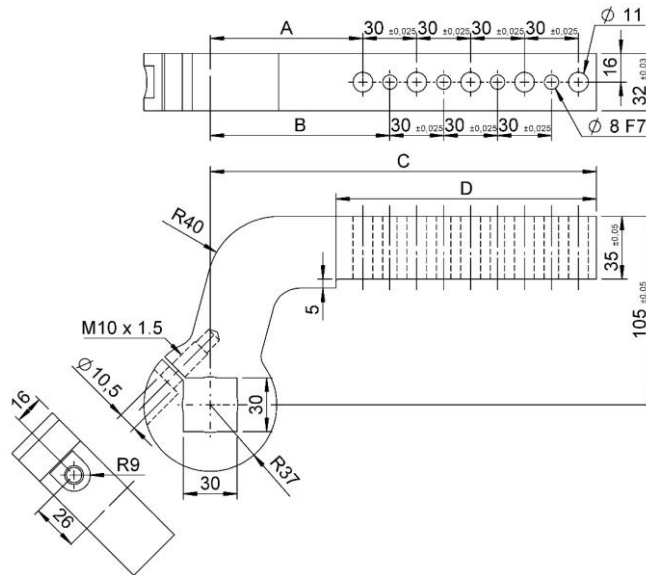


CPN 80 – Offset 25 mm



部件号 Part no.	NAAMS 规格 codice / code	A	B	C	D	重量 / Weight [Kg]	定位销孔数 Ø8 N. dowel holes Ø8	螺纹孔数 Ø11 N. screw holes Ø11
VNA80A-130B	ACA130M	85	100	155	85	2.1	2	3
VNA80A-131B	ACA131M	85	100	185	115	2.4	3	4
VNA80A-132B	ACA132M	85	100	215	145	2.7	4	5
VNA80A-133B	ACA133M	85	100	245	175	3.0	5	6
VNA80A-134B	ACA134M	85	100	275	205	3.3	6	7
VNA80A-135B	ACA135M	85	100	305	235	3.6	7	8
VNA80A-136B	ACA136M	85	100	335	265	3.9	8	9
VNA80A-137B	ACA137M	85	100	365	295	4.2	9	10
VNA80A-138B	ACA138M	85	100	395	325	4.5	10	11

CPN 80 – Offset 70 mm

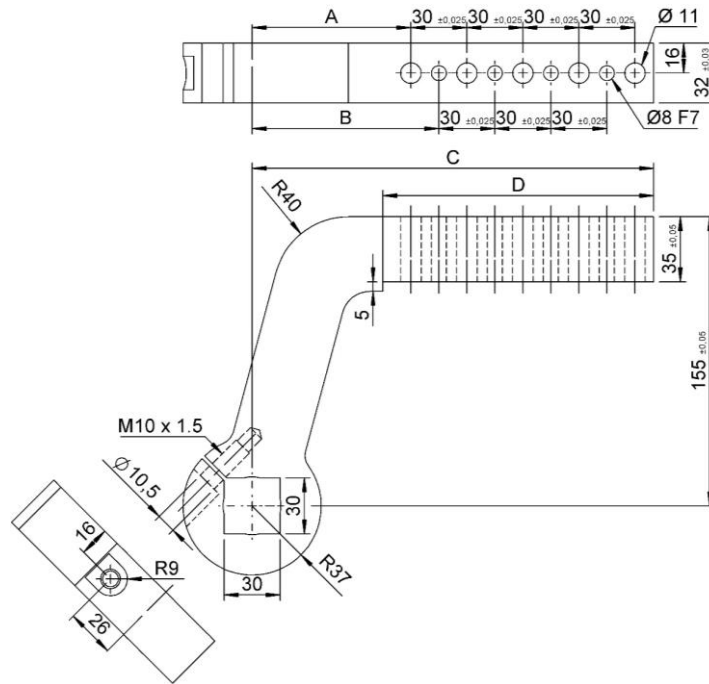


部件号 Part no.	NAAMS 规格 代号 / code	A	B	C	D	重量 / Weight [Kg]	定位销孔数 Ø8 N. dowel holes Ø8	螺纹孔数 Ø11 N. screw holes Ø11
VNA80A-150B	ACA150M	85	100	155	85	2.1	2	3
VNA80A-151B	ACA151M	85	100	185	115	2.4	3	4
VNA80A-152B	ACA152M	85	100	215	145	2.7	4	5
VNA80A-153B	ACA153M	85	100	245	175	3.0	5	6
VNA80A-154B	ACA154M	85	100	275	205	3.3	6	7
VNA80A-155B	ACA155M	85	100	305	235	3.6	7	8
VNA80A-156B	ACA156M	85	100	335	265	3.9	8	9
VNA80A-157B	ACA157M	85	100	365	295	4.2	9	10
VNA80A-158B	ACA158M	85	100	395	325	4.5	10	11

根据要求可提供其它型号 / Other types available on request



CPN 80 - Offset 120 mm



部件号 Part no.	NAAMS 规格 代号 / code	A	B	C	D	重量 / Weight [Kg]	定位销孔数 Ø8 N. dowel holes Ø8	螺纹孔数 Ø11 N. screw holes Ø11
VNA80A-170B	ACA170M	85	100	155	85	2.1	2	3
VNA80A-171B	ACA171M	85	100	185	115	2.4	3	4
VNA80A-172B	ACA172M	85	100	215	145	2.7	4	5
VNA80A-173B	ACA173M	85	100	245	175	3.0	5	6
VNA80A-174B	ACA174M	85	100	275	205	3.3	6	7
VNA80A-175B	ACA175M	85	100	305	235	3.6	7	8
VNA80A-176B	ACA176M	85	100	335	265	3.9	8	9
VNA80A-177B	ACA177M	85	100	365	295	4.2	9	10
VNA80A-178B	ACA178M	85	100	395	325	4.5	10	11

根据要求可提供其它型号 / Other types available on request

